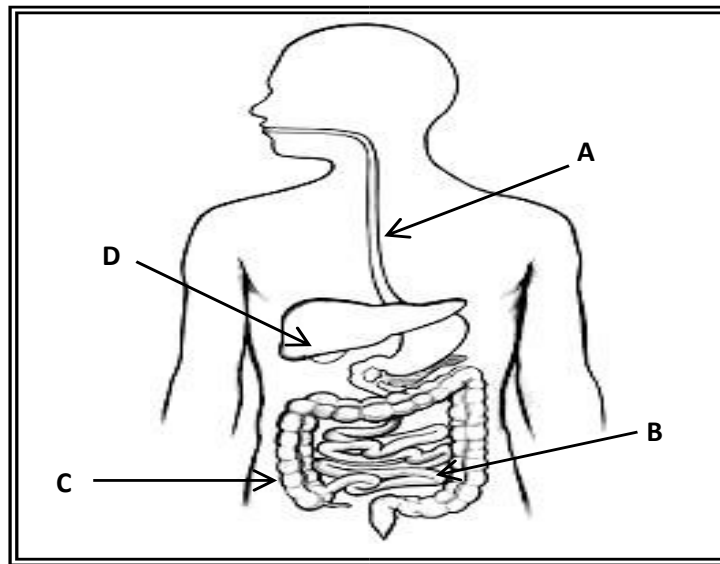


Year 10

Note: Write questions and answers at the back of your Home Economics exercise book.

QUESTION 1

- (a) The diagram below shows the Human Digestive system.



- i) Name the parts labelled **A**, **B**, **C** and **D**.

A		C	
B		D	

- ii) State the function of the mouth in the digestion process.

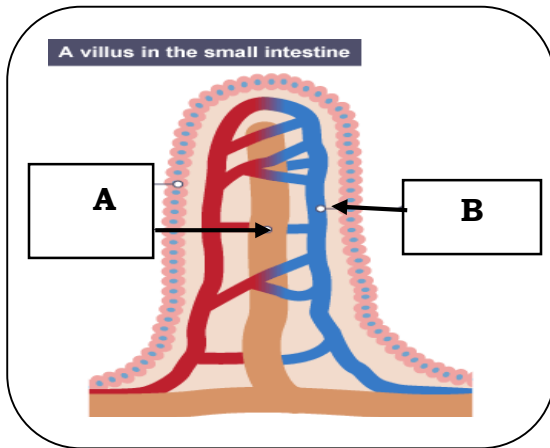
iii) State the function of part labelled C.

iv) Fill in the empty spaces.

a) Fats $\xrightarrow{\text{X}}$ Fatty acid and glycerol.

b) Peptones $\xrightarrow{\text{erepsin}}$ Y

v) Correctly label the parts of the villus and answer the following questions.



(i) Label the parts A and B.

A: _____

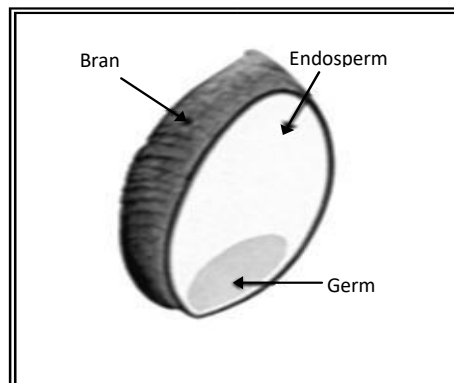
B: _____

(ii) Name two nutrients that are absorbed in Parts labelled A and B.

A: _____

B: _____

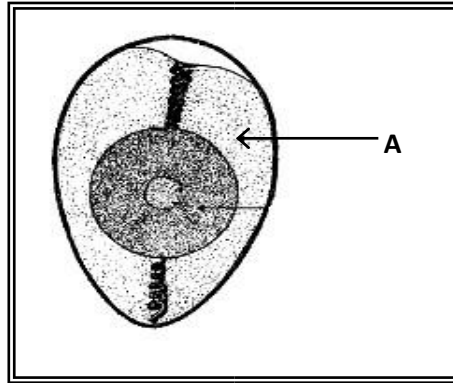
(b) The diagram given below shows the structure of a wheat grain.



(i) Name **one** nutrient present in the bran.

(ii) Why whole meal flour cannot be kept for a longer time compared to plain flour.

(c) The diagram given below shows the structure of an egg.



:

(i) Discuss **one** function of the part labelled **A**.

(iii) The formation of a black ring around the yolk after boiling makes it unappetizing in colour though the nutritional value is not affected.

State one cause and one preventive measures to be taken to avoid black ring around the yolk

Cause: _____

Prevention: _____

The End

