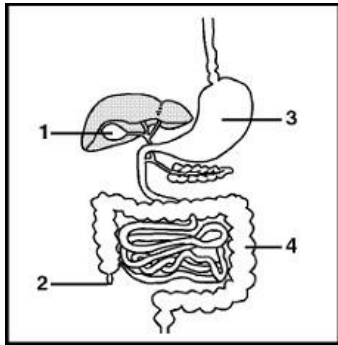


RISHIKUL SANATAN COLLEGE
Y10 BASIC SCIENCE: COVID HOLIDAY ASSIGNMENT

Day 1

1. Drawn below is the digestive system of human.



Complete the table below by using the above diagram.

ORGAN	DESCRIPTION	FUNCTION
1		
3		
4		

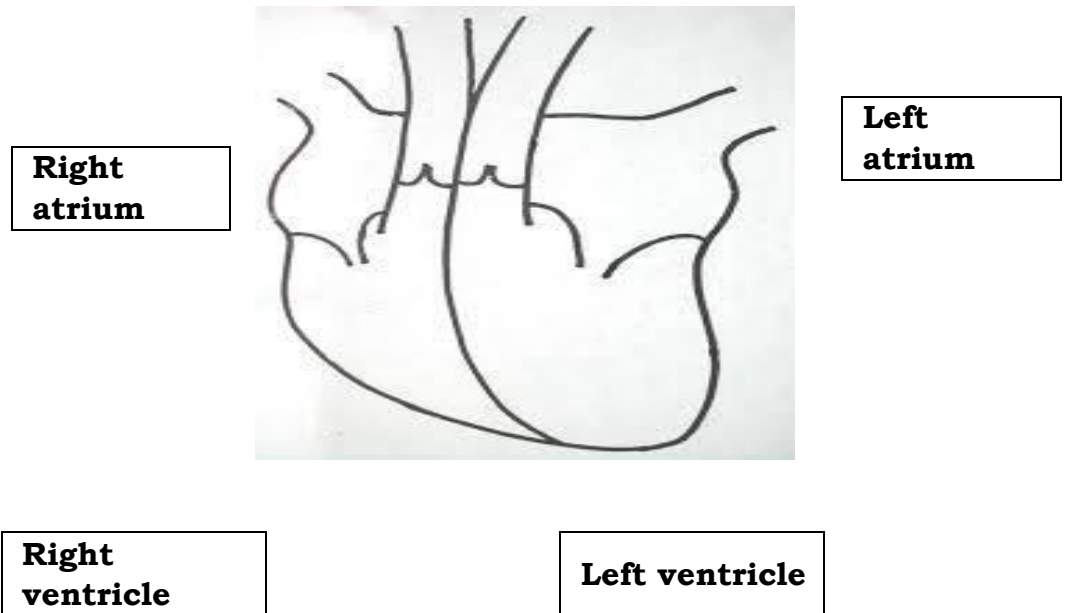
Day 2

Complete the table given below based on the basic food test by writing correct indicator used and the positive test.

Food	Indicator used	Positive test
Starch	(i)	Colour changes to bluish black
Glucose	Benedict's solution or Fehling's solution A and B	(ii)
Protein	(iii)	
Fats	Brown paper or filter paper	(iv)

Day 3

The diagram below is of a mammalian heart.



Draw arrows and label on the diagram above to show the direction and flow of oxygenated and deoxygenated blood in the heart.

Day 4

There are three main blood vessels in the body. Complete the table below on type of blood vessel, structure and functions of the blood vessels.

Blood vessel	Structure	Function
Arteries	Thick walled and muscular	i)
Veins	ii)	Carries blood towards the heart
iii)	iv)	Allows for exchange of materials

State the function of valves in veins?

Day 5

1. Name two excretory products of the kidney.
2. The diagram below shows a symbiotic relationship.



- i. Name the symbiotic relationship shown in the diagram above.
 - ii. Explain the symbiotic relationship named in (i) above.
3. The diagram below shows a component of the blood.



- i. Name the component of blood shown in the diagram above.
- ii. Give one important function of the blood cell shown above.

THE END.